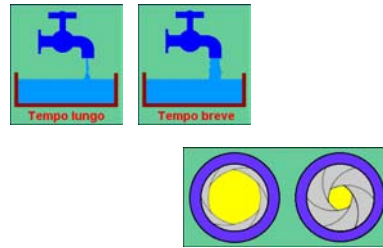


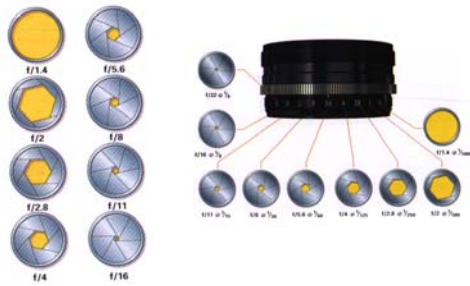
# Esposizione

Alessandro Rizzi

## Coppia tempo/diaframma

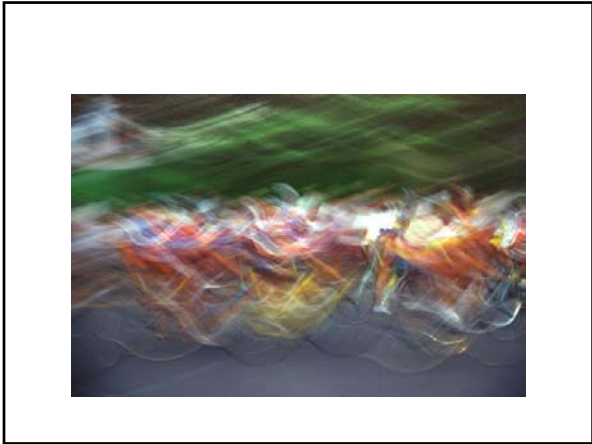


## Diaframmi

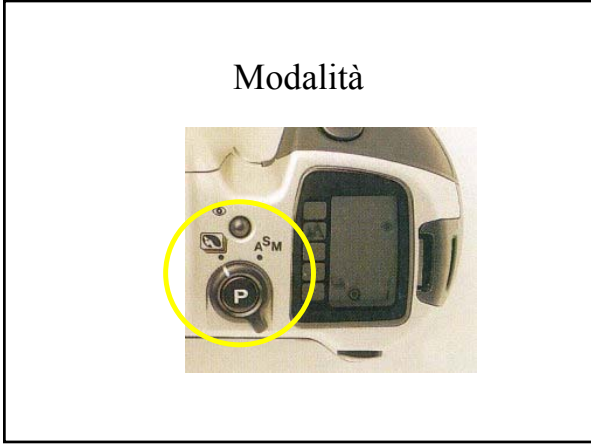


## Tempi





		Aperture settings (f/stop)															
		1.0	1.4	2.0	2.8	4.0	5.6	8	11	16	22	32	45	64			
Shutter Speeds (seconds)	1	0	1	2	3	4	5	6	7	8	9	10	11	12			
	1/2	1	2	3	4	5	6	7	8	9	10	11	12	13			
	1/4	2	3	4	5	6	7	8	9	10	11	12	13	14			
	1/8	3	4	5	6	7	8	9	10	11	12	13	14	15			
	1/15	4	5	6	7	8	9	10	11	12	13	14	15	16			
	1/30	5	6	7	8	9	10	11	12	13	14	15	16	17			
	1/60	6	7	8	9	10	11	12	13	14	15	16	17	18			
	1/125	7	8	9	10	11	12	13	14	15	16	17	18	19			
	1/250	8	9	10	11	12	13	14	15	16	17	18	19	20			
	1/500	9	10	11	12	13	14	15	16	17	18	19	20	21			
	1/1000	10	11	12	13	14	15	16	17	18	19	20	21	22			



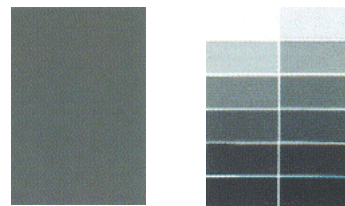
## Sottoesposizione



## Misurazione della luce



## Grigio medio



Grigio medio

